

WebAdvisor:

You can access personal SBU Account information through *WebAdvisor*, such as grades, account status, and class schedules. You can access *WebAdvisor* by going to <http://www.sbuniv.edu>, click on *My SBU*, click on the link *Web Advisor*.

powered by
Datatel

User ID:

Password:

Show my password hint:

[What's my user ID?](#) | [What's my password?](#) | [I'm new to WebAdvisor](#)

Read the *What's my user ID?*, *What's my password?*, and *I'm new to Webadvisor* information at the bottom of the page.

Computing Resources Acceptable Use Policy:

<http://www.sbuniv.edu/ITS/policies.htm>

Dial Up:

If you are a current SBU student, you may setup dial up at home to access the internet. These instructions are located at:

<http://www.sbuniv.edu/ITS/Help/SBUDialUp.htm>

My Wireless SBU:

For up to date information on My Wireless SBU go to:

<http://www.sbuniv.edu/ITS/wireless/index.htm>

ITS Vision Statement:

Information and Technology Services' vision is to integrate information technology throughout the academic community, to enhance learning, teaching, access to higher education, productivity, and communication.

SBU Homepage:

<http://www.sbuniv.edu>

Helpdesk:

417-328-1782



ITS

1600 University Ave.
Bolivar, MO 65613

ITS

Southwest Baptist University



MY
S
B
U



USING SOUTHWEST
BAPTIST UNIVERSITY'S
TECHNOLOGY SERVICES

ITS Mission Statement:

Information and Technology Services provides leadership in the effective use of information and technology resources as it serves the vision of the university.

Information & Technology Services

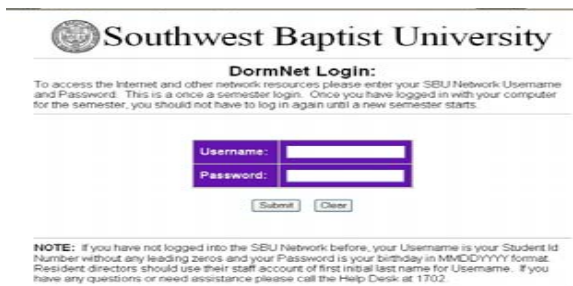
SBU Login Information:

Each student has a unique ID number. This number is located on your student ID card which you should have received during Welcome Week registration. The number is located directly below the picture on the ID card. The ID number used for *DormNet*, *Network*, *Netmail* e-mail and *My SBU* is the last 6 digits in the ID, without the leading zeros. EX: If your ID shows 0123456, then the Username to use for your login is 123456.



Dorm Computer Setup:

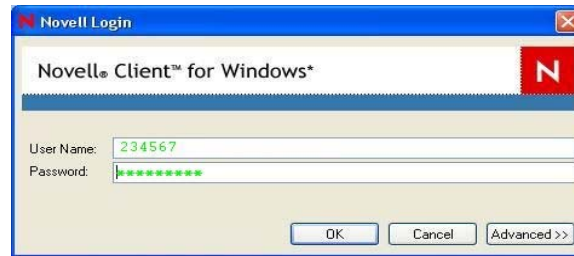
If you have brought a personal computer to SBU to be setup in the dorms, you will need to make sure that you have a network card installed, and a network cable to connect to the SBU network. When you get your computer setup and connected to the network port in your room, you will get the following login:



If you have never logged into the SBU Network before, your Username is your Student ID Number without the leading zeros and your Password is your birthday in MMDDYYYY format. If you have any questions or need assistance please call the Help Desk at 1702. You will not be prompted with this again until next semester.

Network Information:

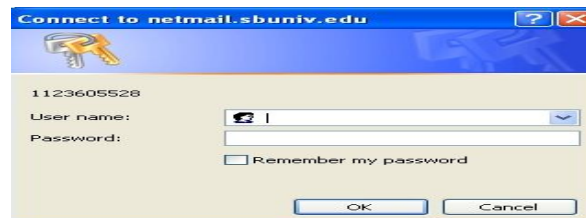
SBU provides many computer resources that are beneficial to students. Each student has 50 MB of personal network storage. This storage (labeled f:\) can be accessed from any lab on SBU's campus. To access your f: drive storage, to use the internet, or to use the variety of software applications provided to SBU users, you must login to the lab computers using your own personal Username and Password. Below is a picture of the *Network* login:



The User Name is your student ID number, and the initial password is your birthday, eight digits. MMDDYYYY, EX: 02031971. You will not be prompted to change your password. You will need to go into your student e-mail and follow the "Changing your Password" instructions in the next column to change your password.

Student E-Mail:

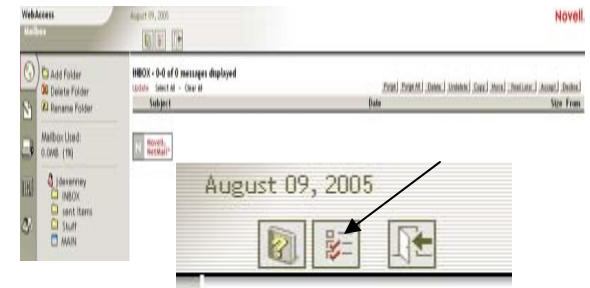
The student e-mail at SBU is called *Netmail*. As a student of SBU, you are given an SBU e-mail account. To access this e-mail account you can go to <http://netmail.sbuniv.edu>, or go to SBU's homepage, <http://www.sbuniv.edu>, *My SBU*, and then click the link that reads *Netmail*. The User Name and Password for your e-mail is the same as your *Network* login.



Your e-mail address will be sent to you via e-mail when you login for the first time to *Netmail*.

Changing your Password:

You can change your password for the *Netmail*, the *Network* Login, *Blackboard*, and dial up in *Netmail*. Follow the instructions to get into *Netmail*. Once you get into *Netmail*, it should look like this:



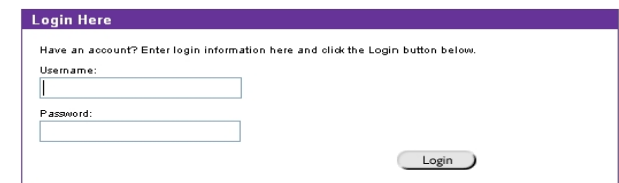
Click on the box in the middle as shown above, and change your password.

Blackboard

Blackboard is a portal that gives you access to coursework and online communities. To get to *Blackboard*, you will need to go to <http://www.sbuniv.edu> and click on the *My SBU* link.



Click on *Blackboard*. This is the login box that you will get:



Your *Blackboard* Username and Password will be the same as your *Network* Login.