

# SOUTHWEST BAPTIST UNIVERSITY

# BEARCATS

## 2009 WOMEN'S SOCCER WEEKLY GAME NOTES

### 2009 SCHEDULE

#### August

27 at Quincy W 2-1  
29 at Missouri S&T W 1-0

#### September

4 at Abilene Christian Cancelled  
5 at Dallas Baptist T 2-2 / 2OT  
10 EMPORIA STATE\* W 3-0  
12 MISSOURI SOUTHERN\* W 4-3 / OT  
19 at Northwest Missouri St.\* L 2-1  
24 at Emporia State\* 4:00 PM  
26 at Washburn\* 6:00 PM

#### October

1 at Nebraska-Omaha\* 4:00 PM  
3 TRUMAN STATE\* 12:00 PM  
8 at Missouri Western\* 7:00 PM  
10 at Truman State\* 11:30 AM  
15 at Missouri Southern\* 7:00 PM  
22 CENTRAL MISSOURI\* 3:00 PM  
24 WASHBURN\* 12:00 PM  
29 at Central Missouri\* 7:00 PM  
31 MISSOURI WESTERN\* 12:00 PM

#### November

5 NEBRASKA-OMAHA\* 3:00 PM  
7 NORTHWEST MISSOURI ST.\* 12:00 PM

13-15 NCAA D-II First/Second Rounds TBA  
20-22 NCAA D-II Third Rd/Quarterfinals TBA

#### December

3 NCAA D-II Semifinals TBA  
5 NCAA D-II Final TBA

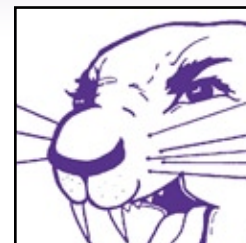
#### \* MIAA game

**SBU Director of Athletic Media Relations:** Justin Wollard  
Office: (417) 328-1799 Cell: (417) 298-2593  
Fax (417) 328-1745 Email: jwollard@sbuniv.edu  
**SBU Soccer Contact:** Greg Gorham ggorham@sbuniv.edu  
**SBU Media Relations Staff:** Aline Lopes, Wes Godsy,  
Patty Wallace, Shelby Martin, Cody Hillyard, Jeremy Couch

### 2009 MIAA STANDINGS

Team	Conference				Overall				
	W	L	T	Win %	W	L	T	Win %	Streak
UNO	4	0	0	1.000	5	3	0	.625	Won 5
NWMSU	3	1	0	.750	7	1	0	.875	Won 3
TSU	3	1	0	.750	4	2	2	.625	Won 2
<b>SBU</b>	<b>2</b>	<b>1</b>	<b>0</b>	<b>.667</b>	<b>4</b>	<b>1</b>	<b>1</b>	<b>.750</b>	<b>Lost 1</b>
UCM	2	1	0	.667	3	3	1	.500	Lost 1
ESU	1	2	0	.333	1	4	1	.250	Lost 1
MWSU	1	3	0	.250	3	5	0	.375	Won 1
WU	0	3	0	.000	2	4	0	.333	Lost 3
MSSU	0	4	0	.000	2	6	0	.250	Lost 4

**MATCH 7: SBU BEARCATS (4-1-1, 2-1)**  
**at EMPORIA ST. HORNETS (1-4-1, 1-2)**  
**THURSDAY, SEPTEMBER 24 • 4:00 PM**  
**EMPORIA STATE PITCH • EMPORIA, KS**



**MATCH 8: SBU BEARCATS (4-1-1, 2-1)**  
**at WASHBURN LADY BLUES (2-4, 0-3)**  
**SATURDAY, SEPTEMBER 26 • 6:00 PM**  
**YAGER STADIUM • TOPEKA, KS**

The SBU Bearcats continue on the longest road trip of the season this week, as they have a pair of matches in the state of Kansas; first a rematch against the Lady Hornets of Emporia State on Thursday, followed up with a visit to Washburn University on Saturday. The Bearcats dropped their first game this season last week, against Northwest Missouri State, but still rank fourth in the MIAA standings, just a half game behind Truman and Northwest Missouri for second. The Bearcats currently lead the conference in shots per game (16.4), and trail only conference leader Nebraska-Omaha in points (6.6/game), and goals (12). Junior forward **Jaymye Ross** is leading the Bearcat offense with nine points off three goals and three assists; Ross ranks second in all three categories. Forwards **Shannon Roher** and **Taylor Vick** and midfielder **Kelly Isaac** continue to support the attack.



#### THE COACHES AND THE ALL-TIME SERIES

**Rob Podeyn** is in his first season as Bearcat head coach (56-50-8 in seven years total), after leading the Northwood University (Texas) program since 2006, where he won two conference championships.

Hornet head coach **Jim Schneiderhahn** is looking to improve on last season's 4-15-1 record, and eighth place finish in the MIAA. SBU defeated Emporia State earlier this season, in Bolivar, 3-0, and has not lost to Emporia since the 2005 season opener. The Bearcats lead the

all-time series against Emporia, 13-3-1.

**Tim Collins** is leading the Washburn Lady Blues for his seventh season. Collins, who was named head coach when Washburn began their women's soccer program in 2002, has led Washburn to two NCAA tournament appearances in the last three years. The SBU-Washburn series has been close as of late, with each team recording one win each, along with four ties over the last three seasons.

#### SCOUTING THE HORNETS & LADY BLUES

Emporia State is led on offense by freshman forward **Ashley Hill**. Hill has connected for three goals over six games so far, and ranks sixth in the MIAA in goals scored. Sophomore **Sarah Anderson** leads the Hornet midfielders, and has collected two assists this season, putting her eighth in the conference.

The Lady Blues have struggled early this season, collecting a 2-4 record at this point into the season, and are still looking for their first MIAA victory. Freshman midfielder **Leah Talley** has been a key to Washburn's success, scoring the game winning goals in both of their wins this season.



# 2009 SBU BEARCATS NUMERICAL ROSTER

## ROSTER BREAKDOWN BY YEAR

### Total Squad Members - 31

#### Seniors - 6

Denarika Bostwick, Heidi Lewis, Shannon Roher, Vanessa Roher, Caitlin Tull, Ashley Wilson

#### Juniors - 7

Lindsey Boden, Rochelle Fowler, Emily Hamilton, Johanna Olsson, Dana Rose, Jaymye Ross, Katie Whalon,

#### Sophomores - 7

Blaire Baker, Ashley Covert, Debbie Easter, Kelly Isaac, Rhiane Mitchell, Chelsea Schweigert, Jen Tenholder

#### Freshmen - 11

Callie Beard, Nycole Henderson, Tamaría Hollis, Grace Hughes, Nicole Kasper, Megan Link, Lauren Muniz, Brittani Ready, Halee Ruckman, Chelsea Urquhart, Taylor Vick

#	Name	Pos.	Hgt.	Yr.	Hometown (Previous School)
0	Johanna Olsson	GK	5-8	Jr.	Gothenburg, Sweden (Katrinelundsgymnasiet HS)
00	Grace Hughes	GK	5-7	Fr.	Little Rock, Ark.
1	Megan Link	GK	5-8	Fr.	Wildwood, Mo. (Lafayette HS)
2	Brittani Ready	MF	5-2	Fr.	Millstadt, Ill. (Belleville West HS)
3	Taylor Vick	F	5-5	Fr.	Owasso, Okla. (Owasso HS)
5	Dana Rose	D	5-9	Jr.	Springfield, Mo. (Parkview HS)
6	Lauren Muniz	D	5-5	Fr.	Temple, Texas (Temple HS)
7	Shannon Roher	F/D	5-5	Sr.	Lee's Summit, Mo. (Blue Ridge Christian HS)
8	Katie Whalon	MF	5-8	Jr.	Lee's Summit, Mo. (Lee's Summit HS)
9	Caitlin Tull	MF	5-8	Sr.	Yuba City, Calif. (Yuba City HS)
10	Blaire Baker	MF	5-6	So.	Camdenton, Mo. (Camdenton HS)
11	Chelsea Schweigert	MF	5-6	So.	St. Peters, Mo. (Francis Howell Central HS)
12	Jen Tenholder	M	5-4	So.	Cape Girardeau, Mo. (Jackson HS)
13	Tamaría Hollis	D	5-5	Fr.	Vilseck, Germany (Vilseck HS)
14	Rhiane Mitchell	F	5-5	So.	Manchester, England (St. Matthews RC)
15	Jaymye Ross	F	5-6	Jr.	Oceanside, Calif. (Cathedral Catholic HS)
16	Denarika Bostwick	F	5-5	Sr.	Nassau, Bahamas (Kingsway Academy)
17	Kelly Isaac	MF	5-2	So.	Ferndale, Rhondda, Wales (Ferndal Community School)
18	Rochelle Fowler	MF	5-2	Jr.	Nassau, Bahamas (Temple Christian HS)
19	Vanessa Roher	D	5-5	Sr.	Lee's Summit, Mo. (Blue Ridge Christian HS)
20	Chelsea Urquhart	D	5-9	Fr.	Calgary, Alberta, Canada (Forest Lawn HS)
21	Nycole Henderson	F	5-3	Fr.	Westerville, Ohio (Westerville North HS)
22	Heidi Lewis	M/F	5-4	Sr.	Bixby, Okla. (Bixby HS)
23	Ashley Covert	D	5-1	So.	Springdale, Ark. (Shiloh Christian HS)
25	Ashley Wilson	M/F	5-4	Sr.	Neosho, Mo. (Neosho HS)
28	Nicole Kasper	D	5-5	Fr.	Calgary, Alberta, Canada (Bishop Carroll HS)
29	Callie Beard	D	5-7	Fr.	Lebanon, Mo. (Lebanon HS)
30	Lindsey Boden	M	5-8	Jr.	Ogden, Utah (Ben Lomond HS)
31	Halee Ruckman	D	5-6	Fr.	Sedalia, Mo. (Smith-Cotton HS)
98	Debbie Easter	GK	5-4	So.	St. Louis, Mo. (Oakville HS)
99	Emily Hamilton	GK	5-7	Jr.	Keller, Texas (Keller HS)

## FACTS ABOUT THE

### EMPORIA STATE HORNETS

Location..... Emporia, Kan.  
 Founded..... 1863  
 Enrollment..... 6,258  
 School Colors..... Old Gold & Black  
 Affiliation..... NCAA Division II  
 Conference..... MIAA  
 Head Coach..... Jim Schneiderhahn  
 Alma Mater..... Benedictine  
 Record at School (years) .... 8-53-3 (4th season)  
 Career Record (years)..... 47-97-9 (9th season)  
 Soccer Contact..... Josh Slaughter  
 Office Phone..... (620) 341-5526  
 Email..... jslaught@emporia.edu  
 Web Site..... www.emporia.edu/athletics  
 Overall record last year..... 4-15-1  
 Conference record/finish..... 2-13-1 (8th)

## FACTS ABOUT THE

### WASHBURN LADY BLUES

Location..... Topeka, Kan.  
 Founded..... 1865  
 Enrollment..... 7500  
 School Colors..... Yale Blue and White  
 Affiliation..... NCAA Division II  
 Conference..... MIAA  
 Head Coach..... Tim Collins  
 Alma Mater..... Ottawa  
 School Record..... 62-46-21 (7th Season)  
 Career Record..... 62-46-21 (7th Season)  
 2008 Record..... 15-7-2  
 2008 MIAA Record..... 10-5-1, 4th  
 Starters Returning/Lost..... 6/5  
 Letterwinners Returning/Lost..... 11/9

**Head Coach:** Rob Podeyn (*1st year at SBU and 7th overall*) Dowling College '90

**Assistant Coaches:** Dean Grey (William Woods '08), Jason Massie (Rio Grande '09), Danielle Peters (William Woods, '08), Aline Lopes (SBU '08)

# BEARCAT PROBABLE STARTERS



**7 - SHANNON ROHER**  
F, 5-5, Sr.  
Lee's Summit, Mo.



**15 - JAYMYE ROSS**  
F, 5-6, Jr.  
Oceanside, Calif.



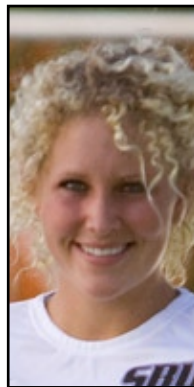
**14 - RHIANE MITCHELL**  
F, 5-5, So.  
Manchester, England



**22 - HEIDI LEWIS**  
M, 5-4, Sr.  
Bixby, Okla.



**17 - KELLY ISAAC**  
M, 5-2, So.  
Ferndale, Rhondda, Wales



**30 - LINDSEY BODEN**  
M, 5-8, Jr.  
Ogden, Utah



**19 - VANESSA ROHER**  
D, 5-5, Sr.  
Lee's Summit, Mo.



**31 - HALEE RUCKMAN**  
D, Fr.  
Sedalia, Mo.



**1 - MEGAN LINK**  
GK, 5-8, Fr.  
Wildwood, Mo.



**9 - CAITLIN TULL**  
D, 5-8, Sr.  
Yuba City, Calif.



**13 - TAMARIA HOLLIS**  
D, 5-5, Fr.  
Wilseck, Germany

## 2009 SOUTH CENTRAL REGIONAL RANKINGS

Team	Record
1. West Texas A&M	5-0-1
2. Midwestern State	3-0-1
3. St. Edward's (Texas)	4-1-1
4. Incarnate Word	5-1-1
5. Texas A&M-Commerce	5-1-0
<b>6. Southwest Baptist</b>	<b>4-0-1</b>
7. Central Missouri	3-2-1
8. Northwest Missouri St.	5-1-0
9. Nebraska-Omaha	3-3-0
10. Angelo State	4-2-0



### THROW-INS

#### STINGING THE HORNETS

Since 2005, SBU has scored more than one goal against ESU seven out of nine times. Six times of those nine matches, the Bearcats put up three or more goals.

#### DIFFERENCE MAKERS

After the 4-3 win against Missouri Southern earlier this year, SBU had eight different players with at least one goal. That was the fifth game of this season; last year, the Bearcats had seven different scorers after just the season opener, an 11-0 win over Oakland City.

#### SHOUTOUT FOR NO SHUTOUTS

Six games into the season, and SBU has still not been shutout. Last season's squad made it six games into 2008 as well, but the longest streak without a shutout in recent history came in 2004, when the Bearcats avoided the clean sheet until the last game of the regular season, against Truman.

# 2009 SBU BEARCATS SEASON STATISTICS

## INDIVIDUAL STATISTICS

##	PLAYER	GP	G	A	Pts	Sh	Shot%	SOG	SOG%	GW	PK-AT
0	Olsson, Johanna	1-0	0	0	0	0	.000	0	.000	0	0-0
1	Link, Megan	6-6	0	0	0	0	.000	0	.000	0	0-0
2	Ready, Brittani	4-0	0	0	0	0	.000	0	.000	0	0-0
3	Vick, Taylor	5-3	0	3	3	6	.000	2	.333	0	0-0
5	Rose, Dana	1-0	0	0	0	0	.000	0	.000	0	0-0
6	Muniz, Lauren	4-0	0	0	0	1	.000	1	1.000	0	0-0
7	Roher, Shannon	6-6	3	1	7	24	.125	13	.542	0	0-0
9	Tull, Caitlin	6-6	1	0	2	8	.125	4	.500	0	0-0
10	Baker, Blaire	6-0	0	0	0	1	.000	1	1.000	0	0-0
12	Tenholder, Jen	6-0	1	1	3	7	.143	2	.286	0	0-0
13	Hollis, Tamaria	6-6	0	0	0	0	.000	0	.000	0	0-0
14	Mitchell, Rhiane	4-3	1	0	2	2	.500	1	.500	0	0-0
15	Ross, Jaymye	6-6	3	3	9	14	.214	8	.571	1	0-0
16	Bostwick, D.	3-0	0	0	0	0	.000	0	.000	0	0-0
17	Isaac, Kelly	6-6	1	1	3	14	.071	9	.643	0	0-0
19	Roher, Vanessa	6-6	1	0	2	4	.250	2	.500	1	0-0
21	Henderson, N.	5-0	0	0	0	0	.000	0	.000	0	0-0
22	Lewis, Heidi	6-6	0	1	1	7	.000	4	.571	0	0-0
25	Wilson, Ashley	2-0	0	0	0	1	.000	1	1.000	0	0-0
29	Beard, Callie	1-0	0	1	1	0	.000	0	.000	0	0-0
30	Boden, Lindsey	6-6	1	0	2	5	.200	3	.600	1	0-0
31	Ruckman, Halee	6-6	0	0	0	0	.000	0	.000	0	0-0
<b>Total</b>		<b>6</b>	<b>13</b>	<b>11</b>	<b>37</b>	<b>94</b>	<b>.138</b>	<b>52</b>	<b>.553</b>	<b>4</b>	<b>0-0</b>
<b>Opponents</b>		<b>6</b>	<b>8</b>	<b>4</b>	<b>20</b>	<b>70</b>	<b>.114</b>	<b>27</b>	<b>.386</b>	<b>1</b>	<b>1-1</b>

## TEAM STATISTICS

	SBU	OPP
<b>SHOT STATISTICS</b>		
Goals-Shot attempts	13-94	8-70
Goals scored average	2.02	1.24
Shot pct.	.138	.114
Shots on goal-Attempts	52-94	27-70
SOG pct.	.553	.386
Shots/Game	15.7	11.7
Assists	11	4
<b>CORNER KICKS</b>		
	34	23
<b>PENALTY KICKS</b>		
	0-0	1-1
<b>PENALTIES</b>		
Yellow cards	6	2
Red cards	0	0
<b>ATTENDANCE</b>		
Total	277	691
Dates/Avg Per Date	2/138	4/173
Neutral Site #/Avg	0/0	

##	GOALTENDERS	GP	Minutes	GA	Avg	Save	Pct	W	L	T	Sho
1	Link, Megan	6-5	465:02	6	1.16	17	.739	3	0	0	2
0	Olsson, Johanna	1-0	69:58	1	1.29	2	.667	0	0	0	0
99	Hamilton, Emily	1-0	45:00	1	2.00	0	.000	0	1	0	0
<b>Total</b>		<b>6</b>	<b>580:00</b>	<b>8</b>	<b>1.24</b>	<b>19</b>	<b>.704</b>	<b>3</b>	<b>1</b>	<b>0</b>	<b>2</b>
<b>Opponents</b>		<b>6</b>	<b>580:00</b>	<b>13</b>	<b>2.02</b>	<b>39</b>	<b>.750</b>	<b>1</b>	<b>3</b>	<b>0</b>	<b>0</b>

GOALS BY PERIOD	1st	2nd	OT	OT2	Total	CORNERS BY PERIOD	1st	2nd	OT	OT2	Total
Southwest Baptist	8	4	0	1	13	Southwest Baptist	9	23	1	1	34
Opponents	2	6	0	0	8	Opponents	11	12	0	0	23

SHOTS BY PERIOD	1st	2nd	OT	OT2	Total	FOULS BY PERIOD	1st	2nd	OT	OT2	Total
Southwest Baptist	35	51	6	2	94	Southwest Baptist	32	30	2	4	68
Opponents	30	38	1	1	70	Opponents	25	16	1	3	45

SAVES BY PERIOD	1st	2nd	OT	OT2	Total
Southwest Baptist	11	7	1	0	19
Opponents	16	21	1	1	39

### NEXT UP FOR THE SBU BEARCATS

SBU faces a pair of MIAA powerhouses next week, as they finish up their road swing against conference unbeaten Nebraska-Omaha, followed by a weekend matchup at home against Truman State. The Mavs have worked their way to a No. 7 regional ranking following a pair of 2-0 wins over Central Missouri and Missouri Southern. Omaha is led by **Nicole Baier**; Baier leads the MIAA in a number of categories, including shots, goals, assists, and points. The Truman State Bulldogs are currently second in the MIAA standings, with a 3-1 conference record. Bulldog goalkeeper **Jayne Grisham** ranks among the best goalies in the league, leading in goals against average (0.56), and ranking second in shutouts (3).



## 2009 NATIONAL NSCAA/ADIDAS POLL

As of September 22, 2009

Rank	School	Prev.	W-L-T
1	Seattle Pacific (Wash.)	1	8 - 0 - 0
2	West Florida	2	6 - 0 - 0
3	Saint Rose (N.Y.)	3	7 - 0 - 0
4	Grand Valley State (Mich.)	4	6 - 0 - 1
5	Columbus State (Ga.)	6	6 - 0 - 1
6	West Texas A&M	7	5 - 0 - 1
7	Minnesota State-Mankato	5	5 - 1 - 0
8	Carson-Newman (Tenn.)	8	7 - 0 - 0
9	Rollins (Fla.)	12	5 - 1 - 1
10	Adelphi (N.Y.)	15	6 - 1 - 0
11	California (Pa.)	24	6 - 1 - 0
12	Midwestern State (Texas)	14	4 - 0 - 1
13	Metro State (Colo.)	20	6 - 1 - 0
14	Cal State Los Angeles	23	7 - 1 - 0
15	Drury (Mo.)	NR	7 - 1 - 0
16	West Chester (Pa.)	NR	6 - 1 - 0
17	Florida Tech	18	6 - 1 - 0
18	Fort Lewis (Colo.)	11	7 - 1 - 0
19	Armstrong Atlantic St. (Ga.)	19	5 - 1 - 2
20	Wisconsin-Parkside	17	5 - 0 - 2
21	St. Edward's (Texas)	21	5 - 1 - 1
22	Franklin Pierce (N.H.)	22	6 - 2 - 0
23	Indiana (Pa.)	16	4 - 1 - 1
24	Chico State (Calif.)	NR	5 - 1 - 2
25	Indianapolis, University of	10	7 - 1 - 0

Also receiving votes: North Georgia, Incarnate Word (Texas), Saint Leo (Fla.), Massachusetts-Lowell, Kutztown (Pa.), Bellarmine (Ky.)