

# SOUTHWEST BAPTIST UNIVERSITY

# BEARCATS

## 2009 WOMEN'S SOCCER WEEKLY GAME NOTES

### 2009 SCHEDULE

#### August

27	at Quincy	W 2-1
29	at Missouri S&T	W 1-0

#### September

4	at Abilene Christian	Cancelled
5	at Dallas Baptist	T 2-2
10	EMPORIA STATE*	3:00 PM
12	MISSOURI SOUTHERN*	12:00 PM
19	at Northwest Missouri St.*	11:30 AM
24	at Emporia State*	4:00 PM
26	at Washburn*	6:00 PM

#### October

1	at Nebraska-Omaha*	4:00 PM
3	TRUMAN STATE*	12:00 PM
8	at Missouri Western*	7:00 PM
10	at Truman State*	11:30 AM
15	at Missouri Southern*	7:00 PM
22	CENTRAL MISSOURI*	3:00 PM
24	WASHBURN*	12:00 PM
29	at Central Missouri*	7:00 PM
31	MISSOURI WESTERN*	12:00 PM

#### November

5	NEBRASKA-OMAHA*	3:00 PM
7	NORTHWEST MISSOURI ST.*	12:00 PM

13-15	NCAA D-II First/Second Rounds	TBA
20-22	NCAA D-II Third Rd/Quarterfinals	TBA

#### December

3	NCAA D-II Semifinals	TBA
5	NCAA D-II Final	TBA

#### \* MIAA game

**SBU Director of Athletic Media Relations:** Justin Wollard  
 Office: (417) 328-1799      Cell: (417) 298-2593  
 Fax (417) 328-1745      Email: jwollard@sbuniv.edu  
**SBU Soccer Contact:** Greg Gorham    ggorham@sbuniv.edu  
**SBU Media Relations Staff:** Aline Lopes, Wes Godsy,  
 Patty Wallace, Shelby Martin, Cody Hillyard, Jeremy Couch

#### FACTS ABOUT SOUTHWEST BAPTIST UNIVERSITY

Location.....	Bolivar, Mo.
Founded.....	1878
Enrollment.....	3,600
School Colors.....	Purple, White and Black
Affiliation.....	NCAA Division II
Conference.....	MIAA
Head Coach.....	Rob Podeyn (Dowling College '90)
Career Record.....	54-50-8 (in 7th year, 1st at SBU)
Career Conference Record.....	28-13-3
2008 Record.....	9-6-3
2008 MIAA Record.....	6-6-2
Starters Returning/Lost.....	6/5
Letterwinners Returning/Lost.....	10/9

#### **G5: vs EMPORIA STATE HORNETS**

**THURSDAY, SEPTEMBER 10 • 3:00 PM**  
**SBU SOCCER FIELD • BOLIVAR, MO**

#### **G6: vs MISSOURI SOUTHERN LIONS**

**SATURDAY, SEPTEMBER 12 • 12:00 PM**  
**SBU SOCCER FIELD • BOLIVAR, MO**



After completing an undefeated non-conference schedule, the SBU Bearcats prepare for MIAA play in their home opener against Emporia State on Thursday. SBU collected a pair of wins, one tie and had one match cancelled due to inclement weather during their four-game road trip to open the season, and the early success had earned them a No. 8 ranking in the NCAA South Central Regional Poll. Despite having the second-least total of shots taken, and only ranking sixth in goals scored, the Bearcats find themselves in second place in the MIAA standings, behind a perfect 4-0 Northwest Missouri squad, due to stellar defensive play that has only allowed three goals over three games and twelve shots on goal, the lowest total in the league. Forwards **Taylor Vick** and **Jaymye Ross** have led the offense thus far; Vick leads the MIAA in assists per game (0.67), while Ross is second in points (5).

#### THE COACHES AND THE ALL-TIME SERIES

Bearcat head coach **Rob Podeyn** will make his SBU home debut after returning from a successful pair of weekend road trips to start the season; Podeyn comes to Bolivar after running the NAI's Northwood University women's soccer program since 2006.

Emporia State head coach **Jim Schneiderhahn** looks to improve upon his squad's 4-15-1 record and 8th place finish in the MIAA during his third season leading the Hornets in 2008. SBU swept the season series against Emporia last season, with a 3-0 shutout in Emporia, followed by a 4-2 win at home later that year. The Bearcats lead the all-time series, 12-3-1, which began back in 2001.

**Trevor Wachsman** is entering his seventh season as head coach of the Lions. Under Wachsman's guidance, Missouri Southern had enjoyed three consecutive seasons of 11 wins or more that ended with last season's 6-12-1 mark. SBU also leads the all-time series over the Lions, 11-9-2.

#### SCOUTING THE HORNETS & LIONS

Emporia has struggled out the gate this season, and is still looking for its first victory. Freshman forward **Ashley Hill** is leading the Hornet offense, with two goals over three games, ranking her second in the MIAA in goals per game. Hill is also in the top ten in the MIAA in shots (10th, with 7), and points (6th, with 4).

Missouri Southern is riding a two-game win streak, after victories over Rockhurst and St. Mary's last week, and can make it three games after their conference opener against Central Missouri on Thursday. The Lions are led by the tandem of forwards **Stephanie Heines** and **Michelle Dimza**, who are each tied for second in goals scored, with two apiece.



# 2009 SBU BEARCATS NUMERICAL ROSTER

## ROSTER BREAKDOWN BY YEAR

### Total Squad Members - 31

#### Seniors - 6

Denarika Bostwick, Heidi Lewis, Shannon Roher, Vanessa Roher, Caitlin Tull, Ashley Wilson

#### Juniors - 7

Lindsey Boden, Rochelle Fowler, Emily Hamilton, Johanna Olsson, Dana Rose, Jaymye Ross, Katie Whalon,

#### Sophomores - 7

Blaire Baker, Ashley Covert, Debbie Easter, Kelly Isaac, Rhiane Mitchell, Chelsea Schweigert, Jen Tenholder

#### Freshmen - 11

Callie Beard, Nycole Henderson, Tamaría Hollis, Grace Hughes, Nicole Kasper, Megan Link, Lauren Muniz, Brittani Ready, Halee Ruckman, Chelsea Urquhart, Taylor Vick

#	Name	Pos.	Hgt.	Yr.	Hometown (Previous School)
0	Johanna Olsson	GK	5-8	Jr.	Gothenburg, Sweden (Katrinelundsgymnasiet HS)
00	Grace Hughes	GK	5-7	Fr.	Little Rock, Ark.
1	Megan Link	GK	5-8	Fr.	Wildwood, Mo. (Lafayette HS)
2	Brittani Ready	MF	5-2	Fr.	Millstadt, Ill. (Belleville West HS)
3	Taylor Vick	F	5-5	Fr.	Owasso, Okla. (Owasso HS)
5	Dana Rose	D	5-9	Jr.	Springfield, Mo. (Parkview HS)
6	Lauren Muniz	D	5-5	Fr.	Temple, Texas (Temple HS)
7	Shannon Roher	F/D	5-5	Sr.	Lee's Summit, Mo. (Blue Ridge Christian HS)
8	Katie Whalon	MF	5-8	Jr.	Lee's Summit, Mo. (Lee's Summit HS)
10	Blaire Baker	MF	5-6	So.	Camdenton, Mo. (Camdenton HS)
11	Chelsea Schweigert	MF	5-6	So.	St. Peters, Mo. (Francis Howell Central HS)
12	Jen Tenholder	M	5-4	So.	Cape Girardeau, Mo. (Jackson HS)
13	Tamaría Hollis	D	5-5	Fr.	Vilseck, Germany (Vilseck HS)
14	Rhiane Mitchell	F	5-5	So.	Manchester, England (St. Matthews RC)
15	Jaymye Ross	F	5-6	Jr.	Oceanside, Calif. (Cathedral Catholic HS)
16	Denarika Bostwick	F	5-5	Sr.	Nassau, Bahamas (Kingsway Academy)
17	Kelly Isaac	MF	5-2	So.	Ferndale, Rhondda, Wales (Ferndal Community School)
18	Rochelle Fowler	MF	5-2	Jr.	Nassau, Bahamas (Temple Christian HS)
19	Vanessa Roher	D	5-5	Sr.	Lee's Summit, Mo. (Blue Ridge Christian HS)
20	Chelsea Urquhart	D	5-9	Fr.	Calgary, Alberta, Canada (Forest Lawn HS)
21	Nycole Henderson	F	5-3	Fr.	Westerville, Ohio (Westerville North HS)
22	Heidi Lewis	M/F	5-4	Sr.	Bixby, Okla. (Bixby HS)
23	Ashley Covert	D	5-1	So.	Springdale, Ark. (Shiloh Christian HS)
25	Ashley Wilson	M/F	5-4	Sr.	Neosho, Mo. (Neosho HS)
26	Caitlin Tull	MF	5-8	Sr.	Yuba City, Calif. (Yuba City HS)
28	Nicole Kasper	D	5-5	Fr.	Calgary, Alberta, Canada (Bishop Carroll HS)
29	Callie Beard	D	5-7	Fr.	Lebanon, Mo. (Lebanon HS)
30	Lindsey Boden	M	5-8	Jr.	Ogden, Utah (Ben Lomond HS)
31	Halee Ruckman	D	5-6	Fr.	Sedalia, Mo. (Smith-Cotton HS)
98	Debbie Easter	GK	5-4	So.	St. Louis, Mo. (Oakville HS)
99	Emily Hamilton	GK	5-7	Jr.	Keller, Texas (Keller HS)

## FACTS ABOUT THE OPPOSITION

### EMPORIA STATE HORNETS

Founded..... 1863  
 Enrollment ..... 6,258  
 School Colors ..... Old Gold & Black  
 Affiliation..... NCAA Division II  
 Conference..... MIAA  
 Head Coach..... Jim Schneiderhahn  
 Alma Mater..... Benedictine  
 Record at School (years) ..... 7-51-3 (4th season)  
 Career Record (years) ..... 46-95-9 (9th season)  
 Soccer Contact..... Josh Slaughter  
 Office Phone..... (620) 341-5526  
 Email ..... jslaught@emporia.edu  
 Web Site ..... www.emporia.edu/athletics  
 Overall record last year ..... 4-15-1  
 Conference record/finish..... 2-13-1 (8th)

### MISSOURI SOUTHERN LIONS

Founded..... 1937  
 Enrollment ..... 5,740  
 School Colors ..... Green & Gold  
 Affiliation..... NCAA Division II  
 Conference..... MIAA  
 Head Coach ..... Trevor Wachsman  
 Alma Mater ..... Fort Lewis (Colo.)  
 Record at School (years) .. 52-47-19 (7th season)  
 Career Record (years) ..... 52-47-19 (7th season)  
 Sports Information Director ..... Justin Maskus  
 Office Phone..... (417) 625-3015  
 Email ..... maskus-j@mssu.edu  
 Web Site ..... www.mssu.edu/athletics  
 Overall record last year ..... 6-12-1  
 Conference record/finish..... 4-11-1 (7th)

**Head Coach:** Rob Podayn (*1st year at SBU and 7th overall*) William Woods, '06  
**Assistant Coaches:** Dean Grey (William Woods '08), Jason Massie (Rio Grande '09),  
 Danielle Peters (William Woods, '08), Aline Lopes (SBU '08)

# BEARCAT PROBABLE STARTERS

## 2009 MIAA STANDINGS



**HEAD COACH  
ROB PODEYN**  
1st year at SBU  
7th overall



**7 - SHANNON  
ROHER**  
F, 5-5, Sr.  
Lee's Summit, Mo.



**15 - JAYMYE  
ROSS**  
F, 5-6, Jr.  
Oceanside, Calif.



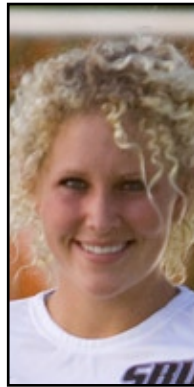
**3 - TAYLOR  
VICK**  
F, 5-5, Fr.  
Owasso, Okla.



**22 - HEIDI  
LEWIS**  
M, 5-4, Sr.  
Bixby, Okla.



**17 - KELLY ISAAC**  
M, 5-2, So.  
Ferndale, Rhondda,  
Wales



**30 - LINDSEY  
BODEN**  
M, 5-8, Jr.  
Ogden, Utah



**19 - VANESSA  
ROHER**  
D, 5-5, Sr.  
Lee's Summit,  
Mo.



**31 - HALEE  
RUCKMAN**  
D, Fr.  
Sedalia, Mo.



**1 - MEGAN  
LINK**  
GK, 5-8, Fr.  
Wildwood, Mo.



**26 - CAITLIN  
TULL**  
D, 5-8, Sr.  
Yuba City, Calif.



**13 - TAMARIA  
HOLLIS**  
D, 5-5, Fr.  
Wilseck, Germany

	MIAA	Over.
1. Northwest Missouri	0-0	4-0
<b>2. Southwest Baptist</b>	<b>0-0</b>	<b>2-0-1</b>
3. Washburn	0-0	2-1
4. Mo. Southern	0-0	2-2
5. Mo. Western	0-0	2-2
6. Truman	0-0	1-1-2
7. Central Missouri	0-0	1-2-1
8. Nebraska-Omaha	0-0	1-3
9. Emporia State	0-0	0-2-1



### THROW-INS

#### MAKE 'EM COUNT

Over the first three games this year, Jaymye Ross has 5 shots on goal, and two goals, including a game winning goal; all of this has come on only six shots taken all season.

#### SPREAD IT AROUND

SBU has seen three different players with goals so far this season (Ross, Shannon Roher, and Kelly Isaac), still short of the seven scorers in the season opener last year, an 11-0 win over Oakland City.

#### PURPLE RAIN

The cancelled matchup against Abilene Christian marks the third year in a row where SBU missed a game due to weather (at Missouri S&T in 2008, and at Drury in 2007.)

# 2009 SBU BEARCATS SEASON STATISTICS

## INDIVIDUAL STATISTICS

##	PLAYER	GP	G	A	Pts	Sh	Shot%	SOG	SOG%	GW	PK-AT
0	Olsson, Johanna	1-0	0	0	0	0	.000	0	.000	0	0-0
1	Link, Megan	3-3	0	0	0	0	.000	0	.000	0	0-0
2	Ready, Brittani	2-0	0	0	0	0	.000	0	.000	0	0-0
3	Vick, Taylor	2-3	0	2	2	4	.000	2	.500	0	0-0
6	Muniz, Lauren	2-0	0	0	0	0	.000	0	.000	0	0-0
7	Roher, Shannon	3-3	1	0	2	9	.111	6	.667	0	0-0
9	Tull, Caitlin	3-3	0	0	0	3	.000	2	.667	0	0-0
10	Baker, Blaire	3-0	0	0	0	1	.000	1	1.000	0	0-0
12	Tenholder, Jen	3-0	0	0	0	1	.000	0	.000	0	0-0
13	Hollis, Tamaría	3-3	0	0	0	0	.000	0	.000	0	0-0
14	Mitchell, Rhiane	1-0	0	0	0	0	.000	0	.000	0	0-0
15	Ross, Jaymye	3-3	2	1	5	6	.333	5	.833	1	0-0
16	Bostwick, Denarika	2-0	0	0	0	0	.000	0	.000	0	0-0
17	Isaac, Kelly	3-3	1	1	3	8	.125	5	.625	0	0-0
19	Roher, Vanessa	3-3	0	0	0	2	.000	1	.500	0	0-0
21	Henderson, Nycole	2-0	0	0	0	0	.000	0	.000	0	0-0
22	Lewis, Heidi	3-3	0	0	0	1	.000	0	.000	0	0-0
25	Wilson, Ashley	1-0	0	0	0	0	.000	0	.000	0	0-0
30	Boden, Lindsey	3-3	0	0	0	2	.000	1	.500	0	0-0
31	Ruckman, Halee	3-3	0	0	0	0	.000	0	.000	0	0-0
<b>Total</b>		<b>3</b>	<b>5</b>	<b>4</b>	<b>14</b>	<b>37</b>	<b>.135</b>	<b>24</b>	<b>.649</b>	<b>2</b>	<b>0-0</b>
<b>Opponents</b>		<b>3</b>	<b>3</b>	<b>2</b>	<b>8</b>	<b>42</b>	<b>.071</b>	<b>12</b>	<b>.286</b>	<b>0</b>	<b>1-1</b>

##	GOALTENDERS	GP	Minutes	GA	Avg	Save	Pct	W	L	T	Sho
1	Link, Megan	3-2	220:02	2	0.82	7	.778	2	0	0	1
0	Olsson, Johanna	1-0	69:58	1	1.29	2	.667	0	0	0	0
<b>Total</b>		<b>3</b>	<b>290:00</b>	<b>3</b>	<b>0.93</b>	<b>9</b>	<b>.750</b>	<b>2</b>	<b>0</b>	<b>0</b>	<b>1</b>
<b>Opponents</b>		<b>3</b>	<b>290:00</b>	<b>5</b>	<b>1.55</b>	<b>19</b>	<b>.792</b>	<b>0</b>	<b>2</b>	<b>0</b>	<b>0</b>

GOALS BY PERIOD				CORNERS BY PERIOD					
1st	2nd	OT	Total	1st	2nd	OT	Total		
Southwest Baptist	4	1	0	5	Southwest Baptist	3	6	1	10
Opponents	1	2	0	3	Opponents	8	6	0	14

SHOTS BY PERIOD				FOULS BY PERIOD					
1st	2nd	OT	Total	1st	2nd	OT	Total		
Southwest Baptist	14	19	4	37	Southwest Baptist	21	20	5	46
Opponents	18	23	1	42	Opponents	13	8	4	25

SAVES BY PERIOD				
1st	2nd	OT	Total	
Southwest Baptist	5	4	0	9
Opponents	7	11	1	19

### NEXT UP FOR THE SBU BEARCATS

SBU heads out on another four-game road swing starting next week, against the MIAA leaders, Northwest Missouri State. The green Bearcats have started off the year 4-0, and are currently ranked sixth in the South Central Regional. Although Northwest has the second-most goals scored in the conference with six, the offense has been spread around, and no one player has more than one goal. Senior **Jessica Braun** leads the defense, and was named MIAA Defender of the Week on September 6.



## TEAM STATISTICS

TEAM STATISTICS	SBU	OPP
<b>SHOT STATISTICS</b>		
Goals-Shot attempts	5-37	3-42
Goals scored average	1.55	0.93
Shot pct.	.135	.071
Shots on goal-Attempts	24-37	12-42
SOG pct.	.649	.286
Shots/Game	12.3	14.0
Assists	4	2
<b>CORNER KICKS</b>		
	10	14
<b>PENALTY KICKS</b>		
	0-0	1-1
<b>PENALTIES</b>		
Yellow cards	5	1
Red cards	0	0
<b>ATTENDANCE</b>		
Total	0	515
Dates/Avg Per Date	0/0	3/172
Neutral Site #/Avg	0/0	

## 2009 NATIONAL NSCAA/ADIDAS POLL

As of September 8, 2009

Rank	Institution	Previous	Record
1.	Seattle Pacific	1	4-0-0
2.	West Florida	2	2-0-0
3.	Saint Rose (N.Y.)	4	3-0-0
4.	Grand Valley State (Mich.)	5	3-0-1
5.	Incarinate Word (Texas)	6	4-0-1
6.	Minnesota State-Mankato	15	4-0-0
7.	Columbus State (Ga.)	7	2-0-1
8.	UC-San Diego	10	2-0-0
9.	Rollins (Fla.)	11	3-0-1
10.	California (Pa.)	24	3-0-0
11.	Carson-Newman (Tenn.)	17	4-0-0
12.	Indianapolis	21	4-0-0
13.	C.W. Post (N.Y.)	18	3-0-0
14.	Fort Lewis (Colo.)	NR	4-0-0
15.	St. Edward's (Texas)	23	3-0-1
16.	Wisconsin-Parkside	25	2-0-1
17.	East Stroudsburg (Pa.)	NR	5-1-0
18.	North Alabama	NR	4-0-0
19.	Cal Poly-Pomona	NR	4-0-0
20.	Colorado Mines	NR	4-0-0
21.	Midwestern State (Texas)	NR	3-0-0
22.	Adelphi (N.Y.)	NR	3-0-0
23.	Armstrong Atlantic State (Ga.)	12	3-1-0
24.	Kutztown (Pa.)	NR	3-0-0
25.	Slippery Rock (Pa.)	8	3-0-0

Others Receiving Votes: Metro State (Colo.), Regis (Colo.), West Texas A&M, Florida Tech, Saint Leo (Fla.), Merrimack (Mass.), Northern Kentucky, Chico State (Calif.), North Georgia