



ITS Vision Statement:

Information and Technology Services' vision is to integrate information technology throughout the academic community, to enhance learning, teaching, access to higher education, productivity, and communication.

ITS
Southwest Baptist University



Computing Resources Acceptable Use Policy:

<http://www.sbuniv.edu/ITS/policies.htm>

My Wireless SBU:

For up to date information on My Wireless SBU go to:

<http://www.sbuniv.edu/ITS/wireless/index.htm>

SBU Homepage:

<http://www.sbuniv.edu>

Helpdesk:

417-328-1702



**MY
SBU**



USING SOUTHWEST BAPTIST UNIVERSITY'S TECHNOLOGY SERVICES

ITS Mission Statement:

Information and Technology Services provides leadership in the effective use of information and technology resources as it serves the vision of the university.

Information & Technology Services



ITS
1600 University Ave.
Bolivar, MO 65613

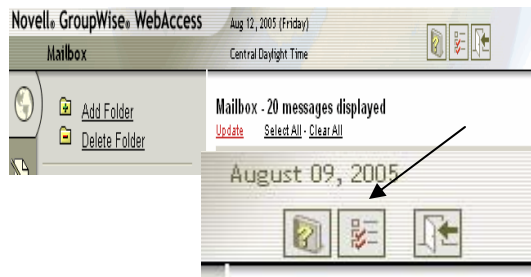
Employee E-mail:

As an employee of SBU, you are given an SBU e-mail account. To access this e-mail account you can go to <http://webmail.sbuniv.edu>, or go to SBU's homepage, <http://www.sbuniv.edu>, *My SBU*, and then click the link *Webmail*. The Username is your first initial of your first name and your last name. (jdevveney) and your Password is initially setup to your eight digit birthday. (MMDDYYYY) This is what the login box looks like:



Changing your Password:

Your password for the *Webmail* and *Blackboard*, can be changed in *Webmail*. **If you are logging in for the first time, you will need to go to your webmail first and change the password.** Follow the instructions to get into *Webmail*. Once you get into *Webmail*, it should look like this:



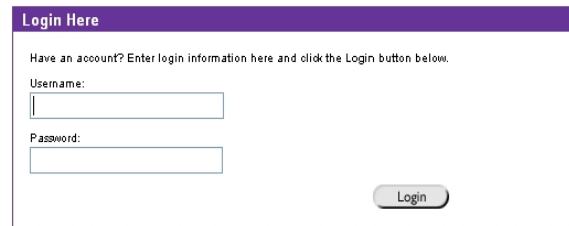
Click on the box in the middle as shown above, and change your password.

Blackboard

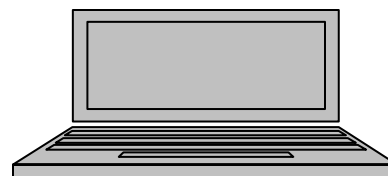
Blackboard is a portal that gives you access to coursework and online communities. To get to *Blackboard*, you will need to go to <http://www.sbuniv.edu> and click on the *My SBU* link.



Click on *Blackboard*. This is the login box that you will get:

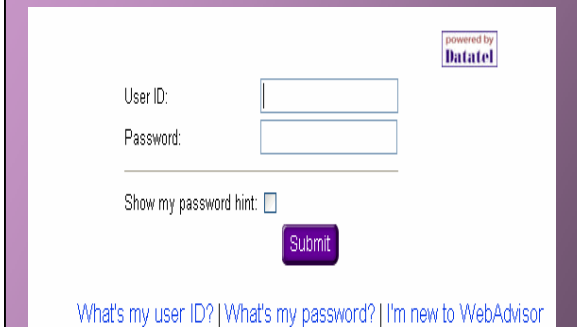


Your Username and Password for *Blackboard* is the same as your Employee E-mail Username and Password.



WebAdvisor:

You can access personal SBU Account information through *WebAdvisor*, such as grades, account status, and class schedules. You can access *WebAdvisor* by going to <http://www.sbuniv.edu>, click on *My SBU*, click on the link *Web Advisor*.



Read the *What's my user ID?*, *What's my password?*, and *I'm new to WebAdvisor* information at the bottom of the page.